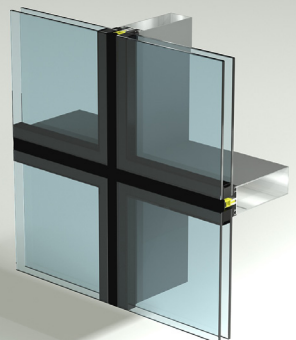
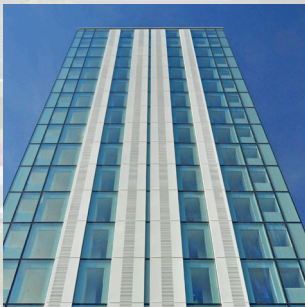


TB50/60 SG

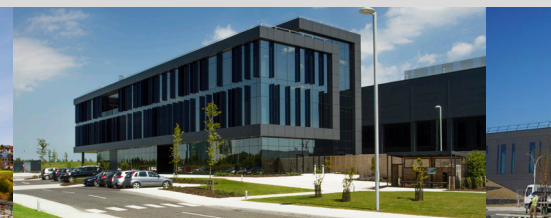


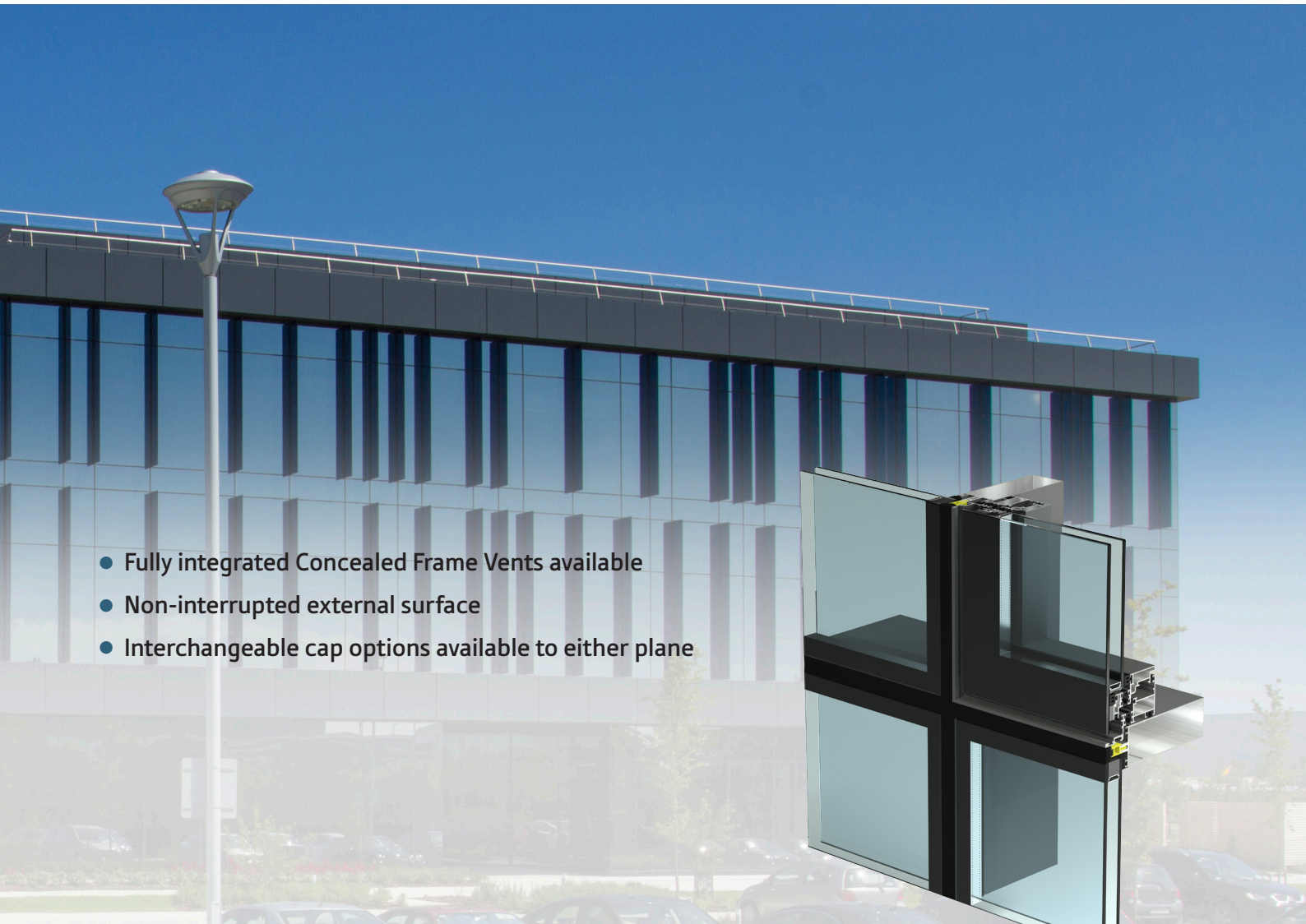


Using the Facade TB50 curtain wall system as its support grid, the TB50 SG system produces a flush finish to exterior face of the facade. The glass is secured in place using toggles, which are placed into channels, forming part of the central seal of the double-glazed units. All joints are weathered using a silicone seal producing a flush non-interrupted surface of glass butt jointed with glass. The fritting of the edges of the double-glazed units is not required when a black spacer bar and a special Dow Corning edge seal edge is used.

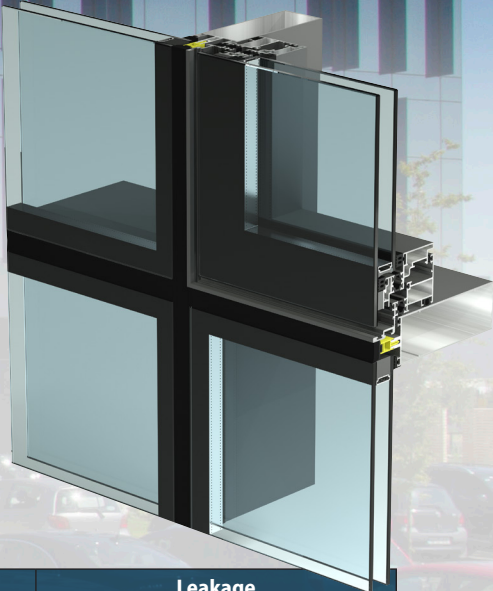
TB50/60 SG SYSTEM FEATURES

- Standard mullion depths available from 3-9/16" to 10-13/16"
- Glazing thickness up to 2-1/16"
- 2-1/16" / 2-3/8" external sight line
- Excellent thermal performance
- Available in dual colour at no additional cost
- Suitable for roof application (subject to design parameters)





- Fully integrated Concealed Frame Vents available
- Non-interrupted external surface
- Interchangeable cap options available to either plane



AAMA501-5 sequence	Code	Pressure		Result	Leakage		
		pa	psf		L/s*m ²	cfm.ft ²	m ³ /h/m ²
Air leakage infiltration	ASTM E 283-04	600	12.5	pass	0.063	0.013	0.23
Air leakage exfiltration	ASTM E 283-04	600	12.5	pass	0.091	0.018	0.33
Water penetration	ASTM E 331-00	720	15	pass	-	-	-
Wind resistance	ASTM E 330-02	2400	50	pass	-	-	-
Repeat air leakage infiltration	ASTM E 283-04	600	12.5	pass	0.063	0.13	0.23
Repeat air leakage exfiltration	ASTM E 283-04	600	12.5	pass	0.091	-	0.33
Repeat water penetration	ASTM E 501-1	720	15	pass	-	-	-
Dynamic water aero engine							
Wind resistance	ASTM E 330-02	3600	75	pass	-	-	-
Soft body impact				pass	-	-	-



