

ALUMINIUM IN ARCHITECTURE

ST70 CONCEALED SASH



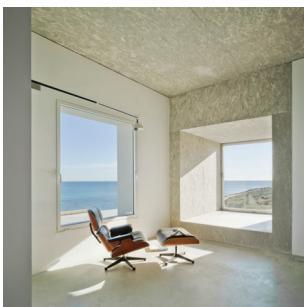
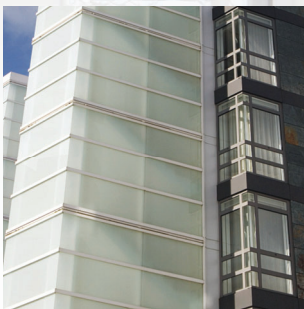
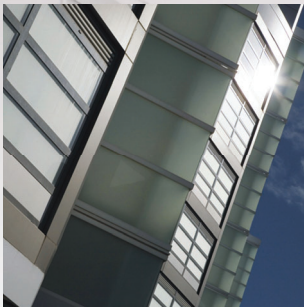
FACADE DESIGN INC.



CONCEALED SASH



# ST70 CONCEALED SASH



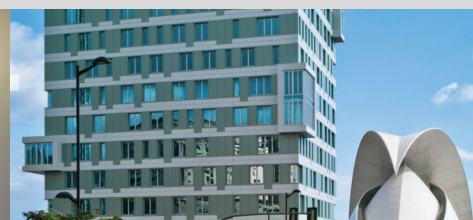
Our concealed sash window has a slim design, with a surface of only 2-5/8" from the exterior. The slim profile provides the inside of the building with a substantial increase in luminosity.

A 1-3/8" thermally broken area, and the insertion of a polyamide core (ranging from 15/16" – 1-3/4") in the frame and sash, allow it to reach values of up to 0.1761 Btu/ft<sup>2</sup> hr °F, maximising its energy efficiency.

Acoustically this system has an increased level of sound insulation with the possibility of installing high-performance units of up to 1-9/16". The ST70 concealed sash meets all the ASTM regulations demonstrating excellent water tightness, air permeability, and wind resistant values.

## ST70 CONCEALED SASH FEATURES

- Slim design with a surface of only 2-5/8" from the exterior
- 1-3/8" thermally broken area
- Insertion of 15/16" – 1-3/4" polyamide core



- Values of up to 0.1761 Btu/ft<sup>2</sup> hr °F of transmission
- A possibility of fitting 1-9/16" high-performance units
- Meets all ASTM regulations



\*multiple sash type test sample

Product Type	Product Designation	Min. Test sample size inches	Min. DP.		Deflection at DP	Min. Structural pressure		Min. Water pressure		Air Leakage resistance		(Average)		
			pa	psf		pa	psf	pa	psf	pa	psf	L/s*m2	cfm.ft <sup>2</sup>	m <sup>3</sup> /h/m <sup>2</sup>
ST70 and ST70HI Awning, casement Fixed window	Class AW-PG40	106" x 95"*	2000pa	41.75psf	L/175	3000pa	62.5psf	1050pa	22psf	600pa	12.5psf	1.59	0.32	5.84
ST70 and ST70HI Inswing, tilt and turn Hopper	Class AW-PG40	106" x 95"*	2000pa	41.75psf	L/175	3000pa	62.5psf	1050pa	22psf	600pa	12.5psf	1.11	0.223	4.09
ST70 Parallel Sash	Class AW-CW30	59" x 59"	2000pa	41.75psf	L/175	3000pa	62.5psf	1200pa	25psf	600pa	12.5psf	1.43	0.28	5.25
ST70 Architectural Single Terrace door open in	Class AW-PG40	35.5" x 82.5"	2000pa	41.75psf	L/175	3000pa	62.5psf	600pa	12.5psf	600pa	12.5psf	0.5	0.1	2.43
ST70 Architectural Double Terrace door open in	Class AW-PG40	35.5" x 82.5"	2000pa	41.75psf	L/175	3000pa	62.5psf	600pa	12.5psf	600pa	12.5psf	0.48	0.097	2.33

